



# RAVEN MTi

## User Guide



**Pro Tools**

**RAVEN 3.6 for macOS**

# REGISTRATION / LICENSING SETUP

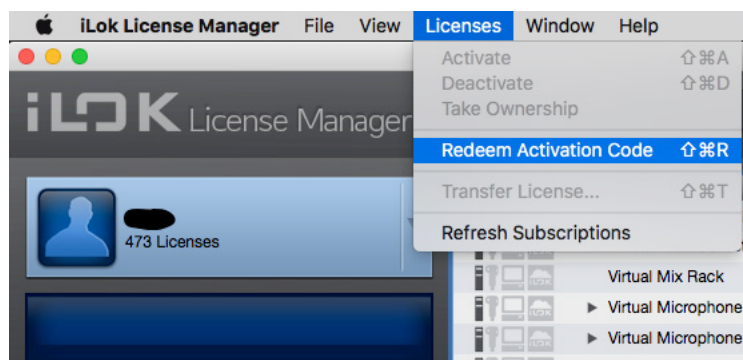
## RAVEN Passcode

Every RAVEN will contain a passcode inside the box, users need to register this passcode in order to create the RAVEN product Page in their Slate account, as well as generate the iLok license needed to unlock the software. After registering the Passcode an email will be sent with a iLok Redeem code.

## iLok Licensing

Copy the iLok redeem code from the registration email and paste it into the redeem tab of the iLok License Manager. More info can be found in the video here:

<https://youtu.be/4lGNGsAiX4g>

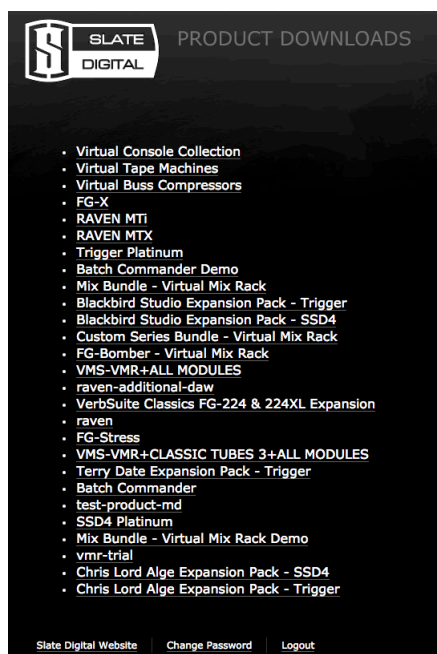


If you don't have an iLok 2 or 3 dongle, you will need to order one to use the Raven. You can purchase from a dealer or a local music technology store. This iLok dongle is required for the RAVEN software and touch driver to be licensed.

Users can report any passcode issues here: <https://slatemt.zendesk.com/hc/en-us/requests/new>

## Downloads and Videos:

After registering the passcode, users will be automatically logged in to their Slate account where the RAVEN downloads and videos can be found. Navigate to the RAVEN MTI tab in your Slate account and go to the downloads section to access the installers for the type of system being used.



## DOWNLOADS:

### RAVEN MTI 3.5 INSTALLERS

- RAVEN MTI2 3.5.0 MAC INSTALLER
- RAVEN MTI-1 3.5.0 MAC INSTALLER
- RAVEN MTI2 3.5.1 WINDOWS INSTALLER
- RAVEN MTI-1 3.5.1 WINDOWS INSTALLER

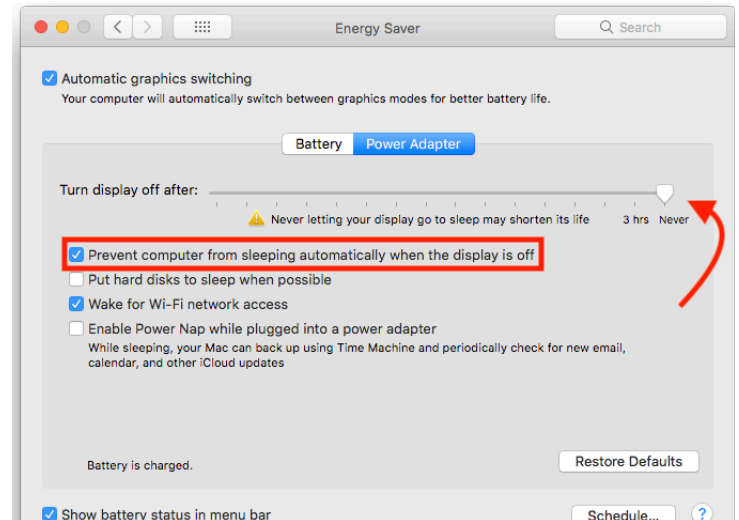
# SYSTEM PREFERENCES CONT.



## Energy/Sleep Settings:

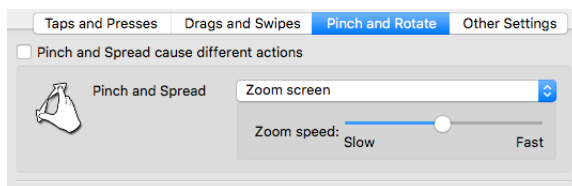
To keep the computer from going to sleep and shutting down the USB ports, open the “Energy Saver” settings in System Preferences and set the computer display settings to “Never” and check the box “Prevent the computer from sleeping automatically when the display is off”.

Users can shut down the RAVEN Display from the back right of the panel, also a Screen Saver can be set to save wear on the display.

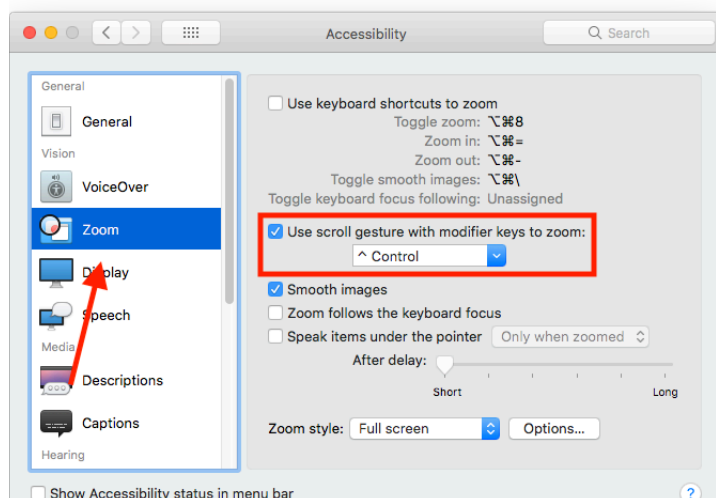


## Pinch Zoom In/Out

To enable “Pinch Zoom”, be sure to check the box in System Preferences/ Accessibility for “Use Scroll Gestures with Modifier Keys to Zoom”. Next, open UPDD Gestures and set “Pinch In/Out” to “Zoom Screen”



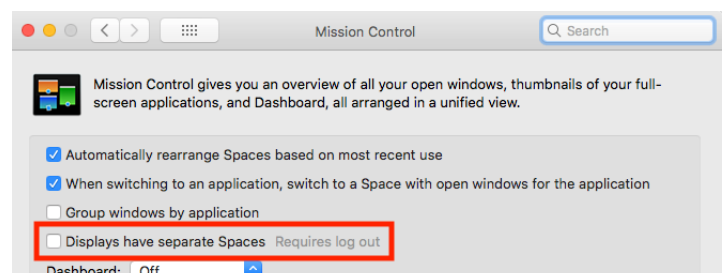
Since Logic Pro has built in Zoom gestures for the edit window, set this to “Zoom in and out” and hold down “Control” to enable pinch zooming.



Touch will not be accurate when Pinch Zooming and touching the RAVEN MTI application, as TUIO doesn't support pinch zoom. All other UI elements are clickable.

## One Window on Two Displays:

Users may prefer to stretch the mixer or edit window across both displays. In order for the OS to allow this feature, “Displays have separate Spaces” must be “unchecked” in System Preferences “Mission Control”. This will also disable the ability to use multiple desktops for quick application switching.

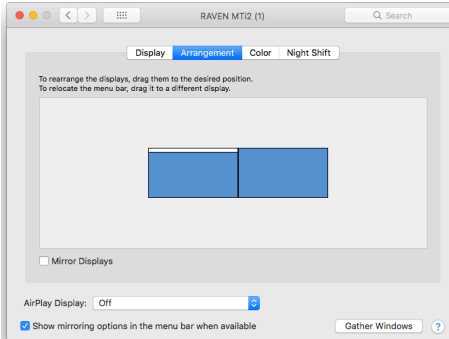


# SYSTEM PREFERENCES



## Set Main Display:

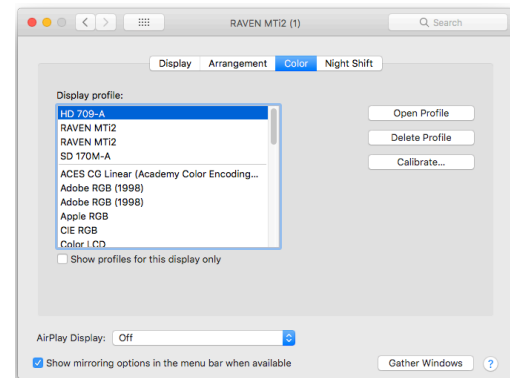
Navigate to System Preferences and in “Display” settings, drag the menu bar to the RAVEN to make it the main display. This is required for the RAVEN tool-bars to appear on the correct displays. More info can be found in the video here: <https://youtu.be/ETS9bLu8UNw>



Set the RAVEN as the display furthest to the left for best performance.

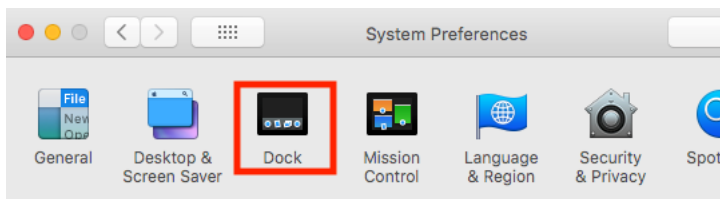
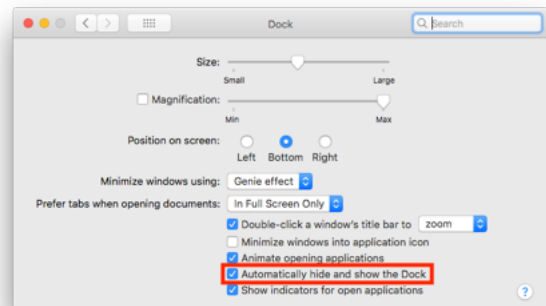
## Set Color Preferences:

Navigate to System Preferences and in “Display” settings under the “Color” tab, be sure RAVEN is set to the default color preferences. If users would like to adjust the color of the RAVEN display this can be done from the menu buttons on the back of the RAVEN display.



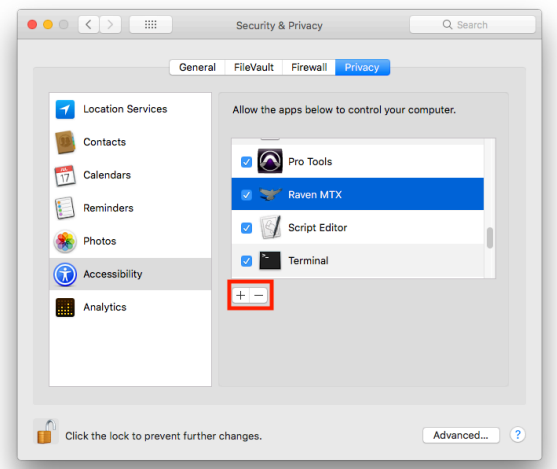
## Auto-Hide Dock:

Navigate to “System Preferences” by going to the Apple drop-down menu on the top left of the Finder and select, System Preferences. Now, select the “Dock” tab and select “Automatically hide and show the Dock”. This will allow more space for the RAVEN 100mm faders.



## Allow Application Accessibility:

For users on OS X 10.9 and higher, select “Security and Privacy” in System Preferences and open the “Privacy” tab on the top right. Then select “Accessibility” from the left menu as shown to the right. Once selected, hit the “Plus” button and in the “Applications” folder add the following applications to allow these apps to control your computer: Automator, Pro Tools, RAVEN MTi, Terminal, UPDD Gestures.



Terminal and UPDD gestures can be found in the “Utilities” folder inside the “Applications” folder

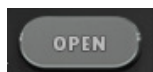


# RAVEN DASHBOARD



## GENERAL TAB:

The General Tab of the RAVEN Dashboard shows all of the available DAW's installed on the system as well as the iLok License available for these DAWs. If the DAW is licensed for the RAVEN, users can hit "Open" to instantly open the DAW and the RAVEN software.



If the DAW is currently open users can hit the "launch" button to open the RAVEN toolbars. To close the RAVEN and the DAW, simply quit the DAW and the RAVEN will automatically close the toolbars and set the gestures back to the default gesture profile.



Users will need to purchase an additional \$99 license for the 2nd DAW as Raven only comes with 1 DAW passcode. This extra DAW can be purchased within your Slate account in the Raven tab or buy hitting the BUY button.

## Tutorials:

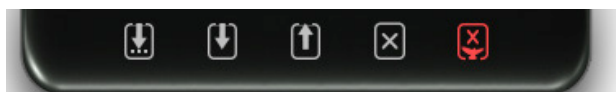
The Tutorial tab of the Dashboard will show all the setup and quick start guides for the DAW's installed on the users system.

## Manuals:

The Manual tab of the Dashboard will show all the manuals for the DAW's installed on the users system.

## Save, Load, and Close:

The buttons on the bottom are used to Save As, Save, Load, and Close the RAVEN toolbars. To close the Dashboard hit the "red" RAVEN button on the far right.



# RAVEN DASHBOARD

## Settings:

The Settings tab of the RAVEN Dashboard has all of the settings needed to get the RAVEN up and running. Click the “configure” button to configure the touch screens on the system. Next hit the Calibrate button to calibrate the display.

## Touch Icons

To save space in the menu bar press the “hide” touch icons button to hide all the UPDD touch driver icons.

## Gestures

Save, load, and open the Gestures Settings all within the Dashboard. Hit “Open” to customize your gestures, then hit “save” to commit the changes. To set the current profile as default, hit the “Default” button to set the default.

## NAVPAD Scroll

Toggle the NavPad scroll option between Inverted and Regular to setup the two finger scroll and single finger swipes to follow the users preferred scrolling method.

## NAVPAD Speed

Set the Navpad speed depending on the preference for the 1 finger drag in the navpad.

## Set User Default:

RAVEN automatically launches in RAVEN Factory Default layout. Once users have customize and saved the layouts. The user can set the current layout to launch at default by touching the “Set User Default” button.

## Restore Default:

To reset all the launch prefs and default layout settings, hit the “restore” button to set the RAVEN back to the factory settings.

## CPU Speed

The RAVEN graphics are always set a max for the fastest performance, but for certain processors this may be too fast. Select a lower CPU setting if there is graphical errors happening in the RAVEN application.



## Help:

Use the help tab to open the Slate Board Forum to ask question and share layouts. If there is an issue with the RAVEN touch screen or software use the Support button to create a support ticket.

## Displays:

If the RAVENs dynamic display detection is not syncing properly, Turn on the Manual detection mode and hit “Detect” to run the configuraiton routine for the RAVEN.

## Mixer Lock

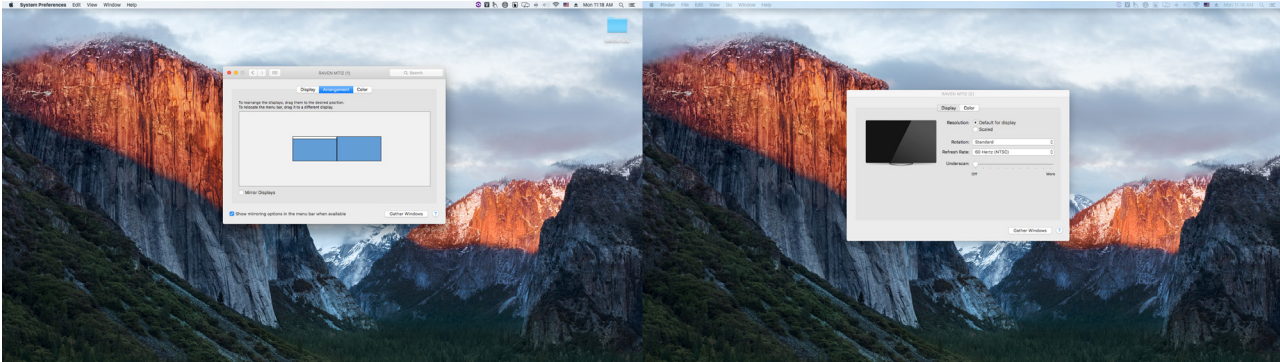
The RAVEN Internal Mixer is setup to follow whichever Window is open on the DAW. For users who prefer to keep the edit window on another monitor will want to enable “MixerLock” so the RAVEN faders stay on the screen and don’t follow the most front window of the DAW.

# DUAL RAVEN SETUP



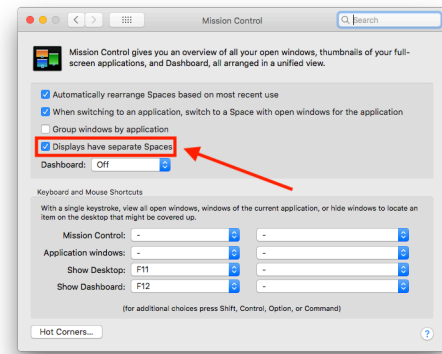
## Setting up Dual RAVEN Displays:

For best window alignment, set the left RAVEN as the main display and the second RAVEN as the right display. Be sure the displays are flush on the top and bottom and set directly next to each other. If using a 3rd display, this will need to be set above the two RAVENS or to the furthest right to allow the RAVEN tool-bars to extend evenly between the touch screens.



## Desktops and Spaces:

To show the Apple Menu Bars on both displays, check the box for “Displays have separate Spaces” in System Preferences/Mission Control. If preferable, the Menu Bar can be on a single display by unchecking “Displays have separate spaces”.

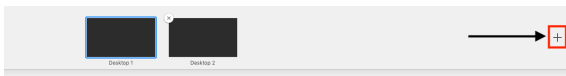


## Desktop setups:

Open Mission Control with the F3 button.

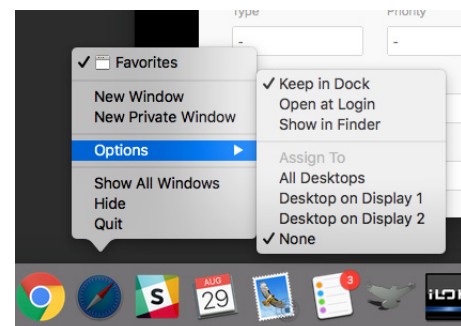


Then create Multiple Desktops using the Mission Control “+” button on the top right corner of the display. These desktops will allow access to the Dock on every display that is set to a desktop.



## Set Applications to open on display:

To set applications to open on certain windows, right click the Application from the dock and set it to the desired display number.



## Swap RAVEN Racks 1-2:

Set the Left Display as your Mixer and Right Display as your Edit Window. To flip the displays, simply hit the “1-2/2-1” display button on the Floating Tool-bar.



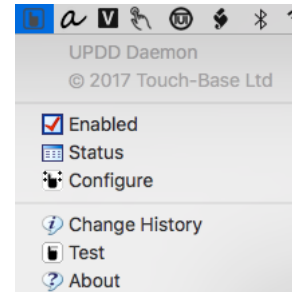
# TOUCH DRIVER



The RAVEN MTi2 Installer will install the RAVEN application, V-Control Pro, and the UPDD Touch Driver. This driver installs three different touch applications that are all required for Multi-Touch. For more info check out the calibration video here: [https://youtu.be/pH8m\\_QFqg2E](https://youtu.be/pH8m_QFqg2E)

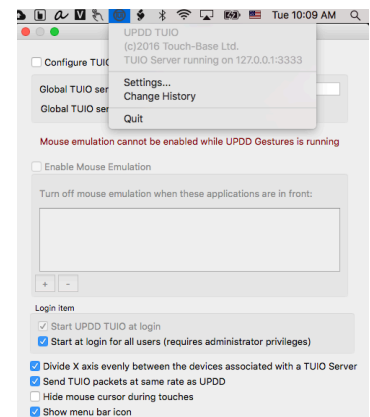
## 1. UPDD Daemon:

This is the application that allows for Configuration/Calibration as well as checking the status of the display and running tests and diagnostics.



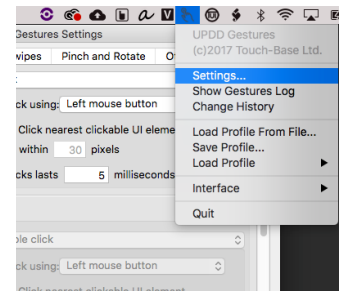
## 2. UPDD TUIO:

This application is required for all Multi-Touch applications including the RAVEN MTi application. Be sure this application is running at login or **there will be no touch** on the RAVEN MTi application.



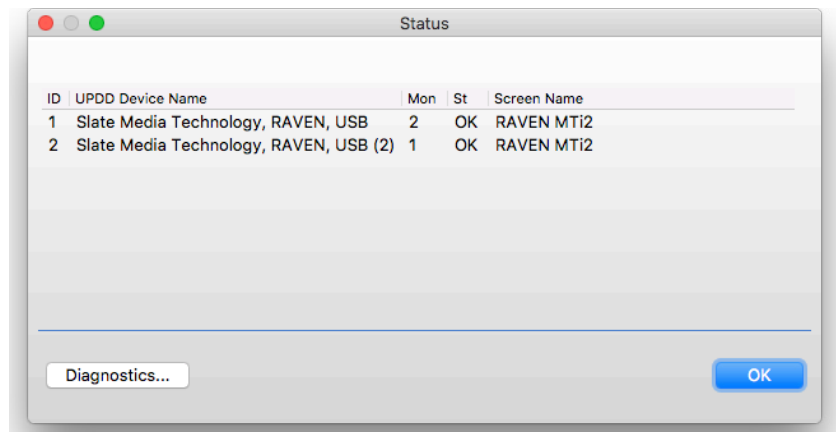
## 3. UPDD Gestures:

This application is required for all single touch and mouse actions to function. This application also allows users to perform gesture actions such as rotate left/right, pinch zoom, and three finger double tap similar to track pad gestures on macOS.



## UPDD Status:

Click the UPDD "Hand icon" in the menu bar and select "Status". The status of the USB connection of the displays will be shown here, all touch displays should say "OK" and be set to Display 1 if using single RAVEN or Display 1 and 2 when using Dual.





# GESTURE SETTINGS



In order to utilize gestures with Logic Pro X users will need to setup the correct gesture profile and related key commands. Gestures can help users increase speed of workflow by using hand movements to launch key commands and system calls.

## Custom Gesture Settings

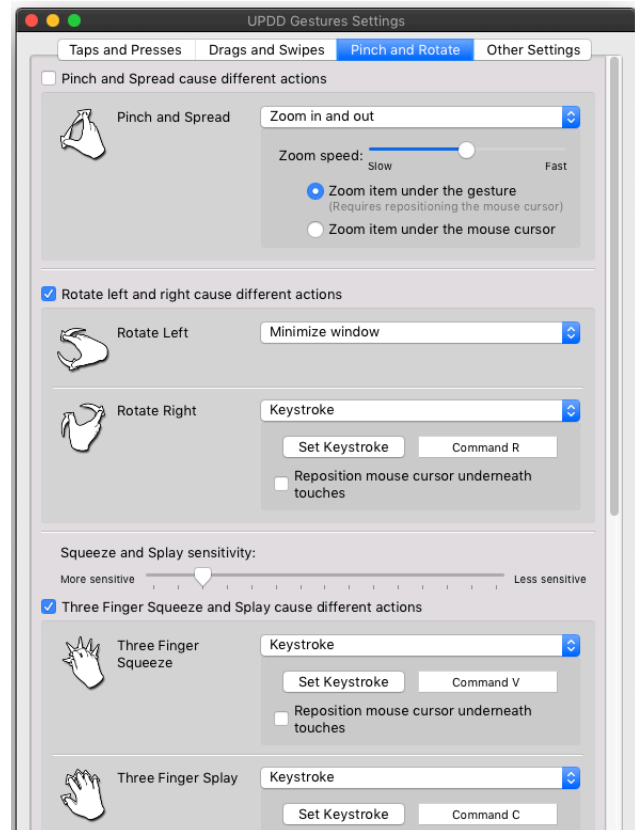
Open the UPDD Gestures app by pressing the “OPEN” button in the RAVEN Dashboard Settings. Here users can assign key commands and system actions to certain gestures.



To load a previously made gesture profile, select “LOAD” from the gestures tab in the Dashboard.

To Save the current gesture profile press the “SAVE” button in the gestures tab of the Dashboard.

To set the current gesture profile to always open when no DAW is being used, press the “Default” button in the Dashboard.

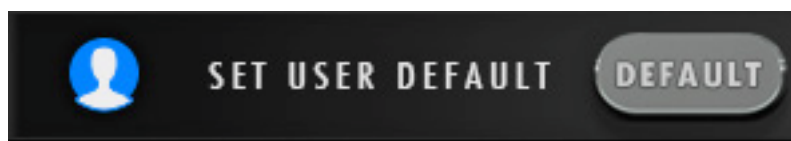


## Automatic Gesture Setup

When launching the DAW and the RAVEN toolbars the gesture profile will automatically load for that DAW. If users prefer to set their own custom gesture profile for that DAW open the Gestures Editor and make the changes. Next, press the “Save RAVEN Session” button to save the current toolbar layout and gesture settings.



To set the RAVEN to automatically open/default to this layout and gesture profile hit the “Set User Default” button in the Dashboard.

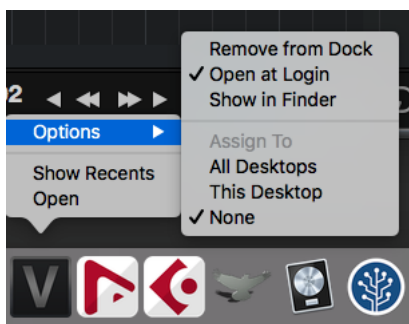


Since the RAVEN needs certain gestures to work correctly, Users shouldn't enable 2 finger drag or change any of the single touch actions.



# V-CONTROL PRO

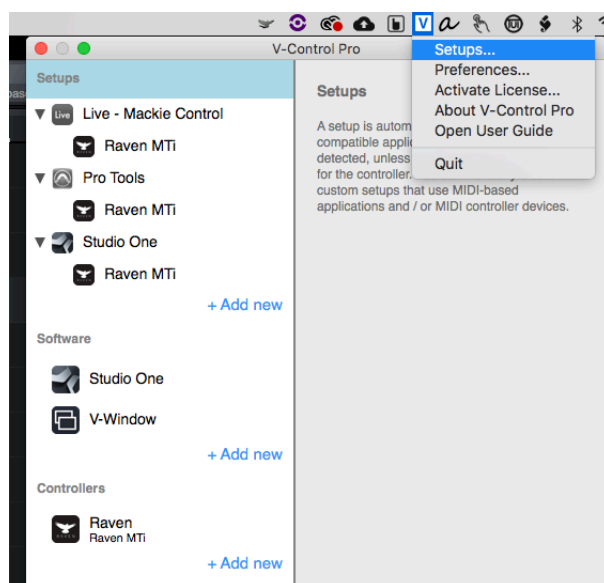
The RAVEN installer will also install V-Control Pro which will be needed to send the HUI communication data from the DAW to the RAVEN. To save time and get up and running faster after restart, drag the V-Control Pro application into the dock. Then, right click the V-Control Pro icon and select “Open at Login”.



V-Control Pro is using the computer http ports to communicate with the DAW, so be sure the firewall or Anti-Virus software is not blocking V-Control Pro from accessing the DAW.

V-control must first be opened and connected to the DAW for RAVEN to work correctly, double check the “V” for V-control is showing in the Top Right Corner of the Menu Bar.

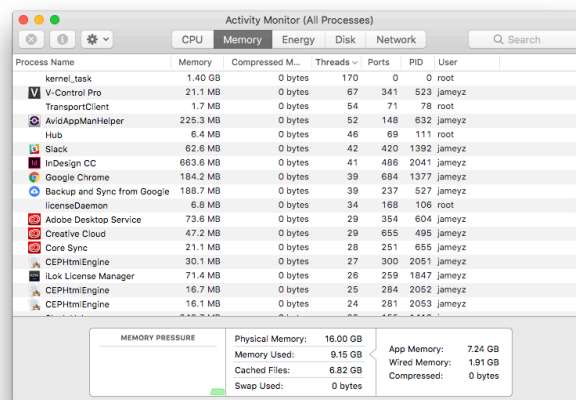
To check V-Control Pro is syncing with the DAW, open the V-Control Pro settings window and the current application should be showing in full color and not “grayed” out. Once all applications are open, users should notice the DAW showing in the “Software” tab and the RAVEN MTi showing in the “Controllers” tab. Finally, in the “Setups” tab, the DAW and RAVEN should be lit up.



Users don't need a license to use Raven with V-control Pro. Be advised that this version of V-Control Pro is unlicensed since V-control Pro doesn't need a license to work with Raven.

## Quitting V-Control Pro

User will notice that V-Control Pro is not shown in the “Force Quit” applications window. If V-Control Pro freezes, open Activity Monitor and stop the process then relaunch V-Control Pro.

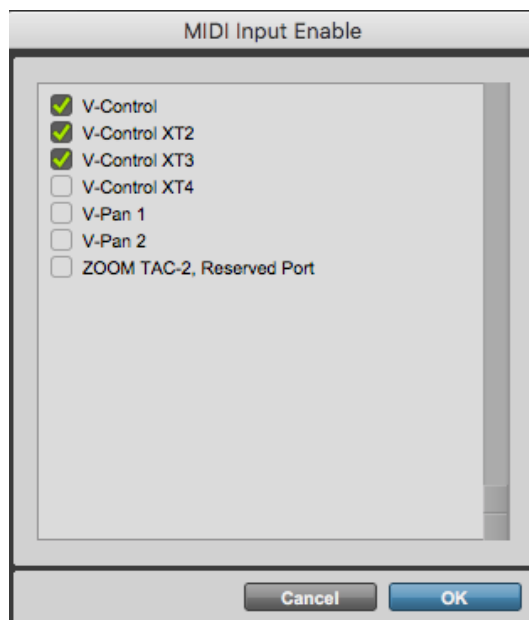
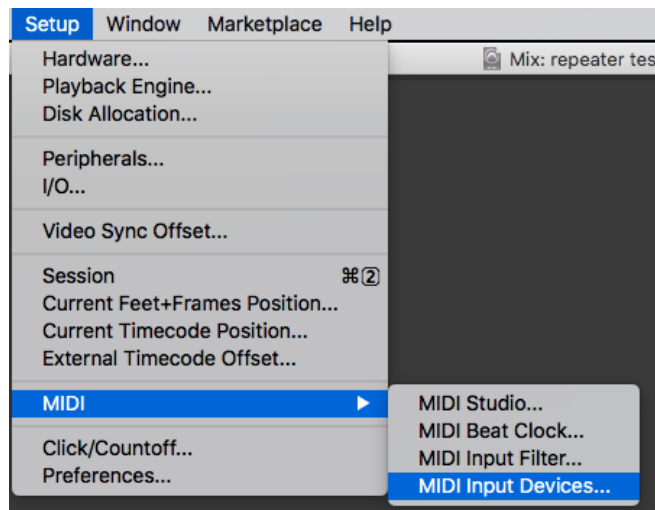


# PRO TOOLS PREFERENCES

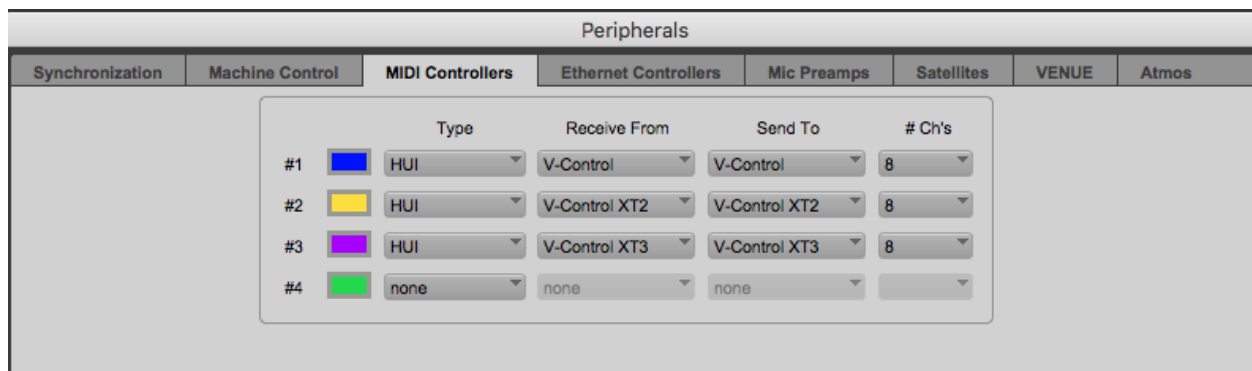


In order for V-Control Pro to show in the MIDI controller tabs, V-Control Pro must be setup as a MIDI input device. Navigate to the “Setup” tab and go to the MIDI drop menu and select MIDI Input Devices.

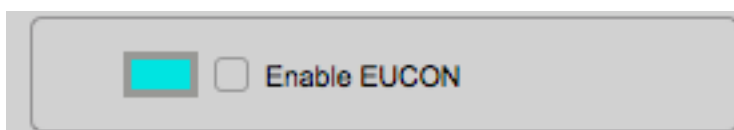
In the MIDI INPUT DEVICES select V-Control, V-Control XT2, and V-Control XT3,



Open the “Peripherals” window from the “Setup” tab of the Pro Tools menu bar. Then go to the “MIDI Controllers” tab. Under the drop-down menu, select HUI control, Receive from V-Control, Send to V-Control. Repeat for each of the HUI control sections on this screen, selecting V-Control XT2 and V-Control XT3 in the Receive from and Send to sections.



Be sure to disable EUCON or else metering will not show in the RAVEN External Mixer or RAVEN Floating Mixer. Users can enable this option if using a AVID Artist Mix or S6 and utilizing the RAVEN Internal Mixer for meters.

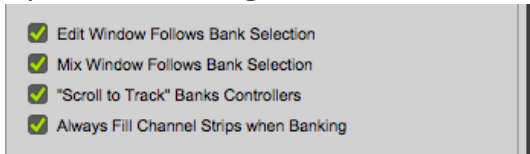


# PRO TOOLS PREFERENCES

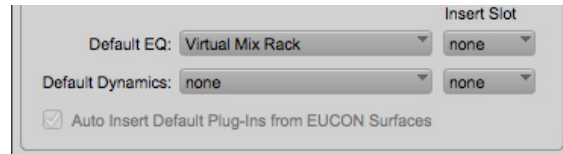


Open Pro Tools and setup the preferences for banking, default EQ and Dynamics and MIDI peripherals,

For banking to work correctly, navigate to the Pro Tools drop-down menu and select Preferences, then click the “Mixing” tab and Check the box next for “Always Fill Channel Strips when Banking”

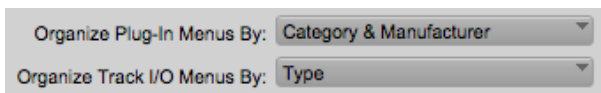


In “Mixing” tab, setup the default EQ and Dynamics plugins. Adding these default plugins will be necessary for the instant plugin Batch Commands to work

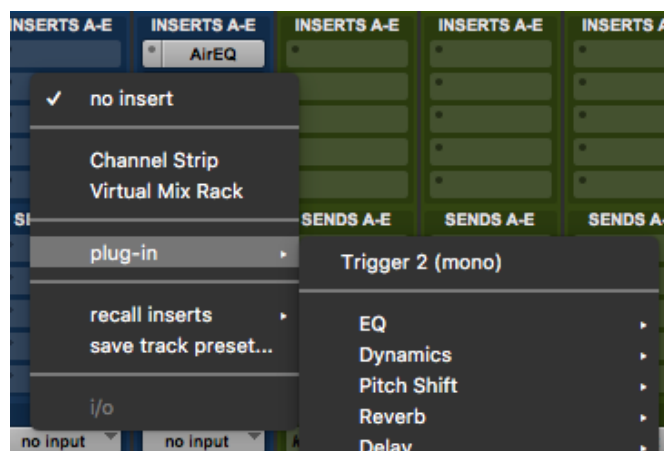


For Dual RAVEN users, it maybe preferable to uncheck “Edit Window Follow Bank Select”. This way users will not loose their selection in the edit window when banking in the RAVEN Internal Mixer.

To access plugins easier and allow some Batch Commands to work correctly, users will want to switch the plugin view to category and manufacturer.



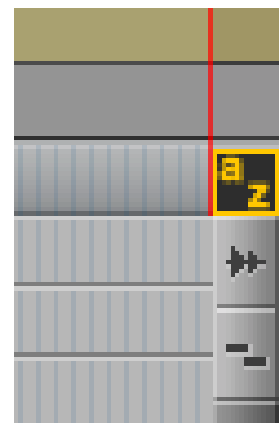
To use the Batch Commands for custom plugins chains and adding favorite plugins to a track, hold down the COMMAND modifier and click on the favorite plugin. This plugin will now appear at the top of the list in the pro tools insert browser



Since some Batch Commands use the Pro Tools key command for the selected track, it will help to have “link timeline and edit window select” enabled. Setup the Pro Tools edit window settings like below”



In order for Pro Tools to respond to the key commands of many Batch Commands, users need to turn on “Keyboard focus” in the edit window.

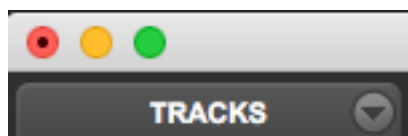


# MANUAL INTERNAL MIXER ALIGNMENT



The RAVEN Internal Mixer requires the Pro Tools mixer window to be setup precisely in order for the RAVEN Multi Touch faders to sync with the Pro Tools faders. Check the Mix Window is maximized by clicking the green maximize button and be sure that the Pro Tools Mix Window is scrolled all the way left, so track 1 is showing. Then drag the track list width to match the red line of the RAVEN.

On OSX 10.11 and Higher, be sure to hold down the “OPTION” modifier while clicking the GREEN maximize button. This button may need to be clicked twice to fully expand to the window.

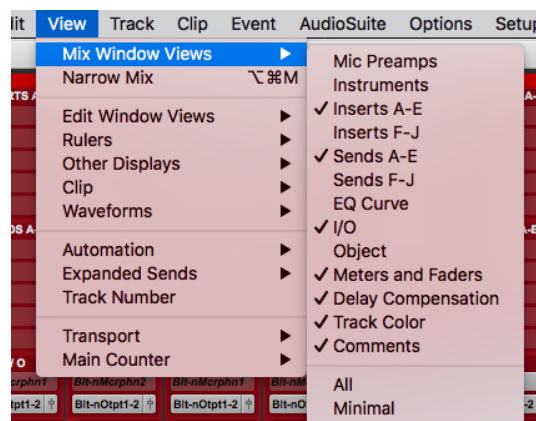


The “grey notch” and the “redline” that runs from the top left of the Raven Toolbar to the bottom is there to show where the Pro Tools “Tracks List Window” should be aligned. If this is a couple pixels off, the Internal Mixer faders will not sync with the Pro Tools Mix Window. If the “grey notch” is even a few pixels off, the faders will not sync and users won’t be able to see the cut out for the Pro Tools meters.



For the Internal Mixer to align properly only the following UI Elements can be checked in the Mix Window Views drop menu.

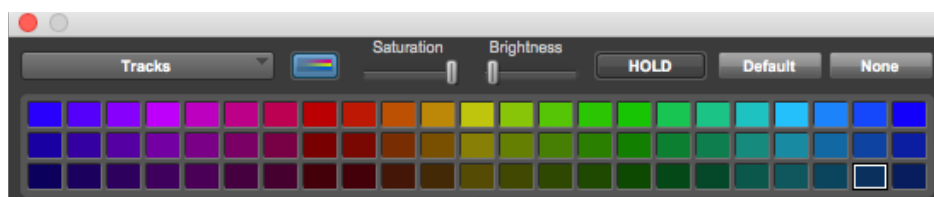
1. Inserts A-E
2. Sends F-J
3. Meters and Faders
4. Track Color
5. Comments



Utilize the Toggle “Insert F-J” Batch Commands or customize some Windows Configurations to view other inserts in the project.

For the “Show Comments” button to work correctly, users will want to hide the “Delay Compensation” option to leave room for the cut out to show the comments.

The Raven Internal Mixer faders will sync better if track colors are on, so check the Mix Windows Views and the Color Palette and be sure the Track Colors are active.

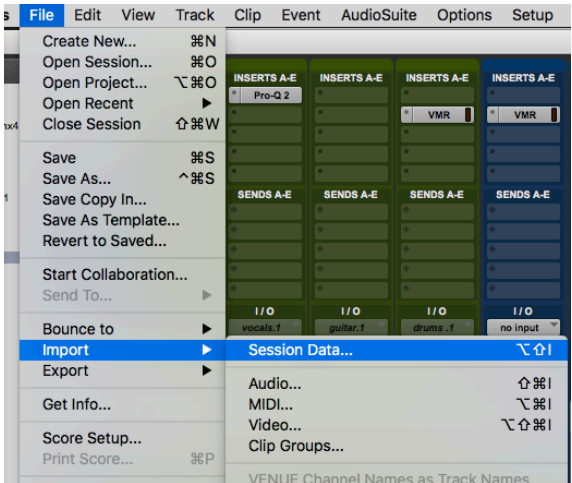
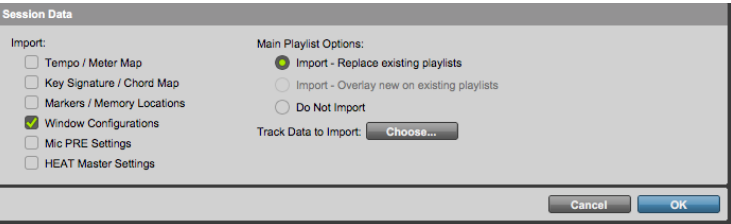


# AUTO INTERNAL MIXER ALIGNMENT

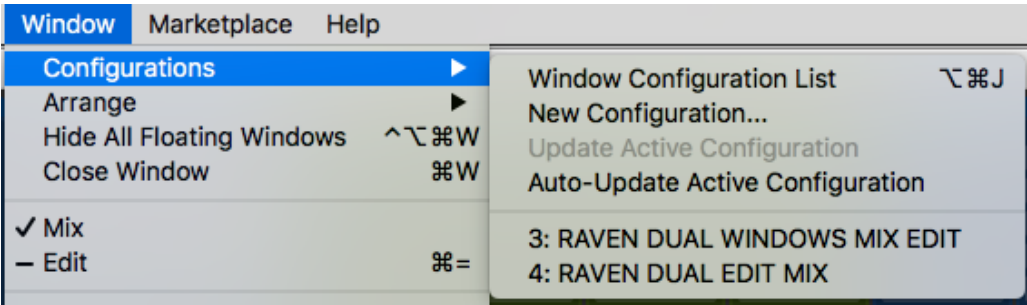
Users can use Pro Tools Templates and Windows Configurations to instantly align the Windows. If using multiple monitors, users will want to modify the preset Windows Configurations with custom ones that utilize all the displays of the computer. For instance, if you using 3 displays, users may want the MIDI window on the 3rd display. These settings can be saved and imported with Windows Configurations.

To import the default RAVEN Template Windows Configurations go to the “File” menu of Pro Tools and choose “import session data”. Then open the Raven Window Configurations template session from /Users/ name/Documents/Pro Tools/Session Templates/Raven Templates.

Next check the “Window Configurations” box from the import options and hit OK.



To recall the Windows Configurations, select the “Configurations” tab from the “Window” drop menu in Pro Tools to recall the window layout.



Users can also create Batch Commands that will open these Windows Configurations. Enter the key command sequence to bring up the Raven Template Mix Window Configuration that was saved to configuration #4.

Decimal .  
Numpad 4  
Numpad \*

#	Action	Delay(ms)	Times
1	numpad .	100	1
2	numpad 4	100	1
3	numpad *	100	1

If there is no Numpad on the keyboard, open up the Batch Command Quick List and search for Window Configuration 3 and 4 and add these into some blank Batch Command buttons.  
For more information watch the video here: <https://youtu.be/liCE0r2Dlu4?t=12m9s>



# RAVEN INTERNAL MIXER ALIGNMENT



This is an example of misalignment due to the mix window not being maximized and the tracks list not in the correct location relative to the “Red Line” of the RAVEN Internal Mixer.



Example of Proper Alignment, notice the red line of the RAVEN is flush with the Pro Tools tracks list and the RAVEN fader colors are syncing with the color of the Pro Tools tracks and meters.



# RAVEN SOFTWARE

## Open the RAVEN software

The RAVEN application is needed for full Multi-Touch and Batch Command integration with the touch screen and DAW. The setup videos can be found here <https://youtu.be/6gNEUvUb3pc> and the quick setup can be found here. <https://youtu.be/liCEOr2Dlu4>

Users must have an iLok2 or iLok3 and a valid RAVEN license to run the RAVEN software.

Launch the RAVEN software from the Applications folder and in the Dashboard select the open button next to the desired DAW. If the DAW is already open, users can select the “Launch” button to open the RAVEN toolbars.



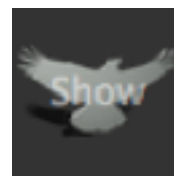
If V-Control Pro, RAVEN, and the DAW have been configured correctly the “Stop” button on the RAVEN should be pushed down, meaning it is now acting as a controller for the DAW.



## Hide RAVEN:

To interact with your OS while RAVEN is open, we have provided a quick and easy Hide RAVEN button above the RAVEN Power button on the RAVEN Tool-bar. Touch or Click with your mouse to Hide your RAVEN software almost entirely except for the RAVEN on the bottom left hand side displaying the text, “Show.” Touch or click the RAVEN Logo “Show” on the bottom left hand side of the screen and the RAVEN software will again appear.

To Add or Remove Racks press the + to show more racks in your tool-bar or – to show less racks. RAVEN Racks can be customized to show as many or few tools as you would like.



When the RAVEN mixer is showing only 1 rack can be open in order to leave room for the Raven External Mixer.

# RAVEN MULTI-TOUCH MIXERS



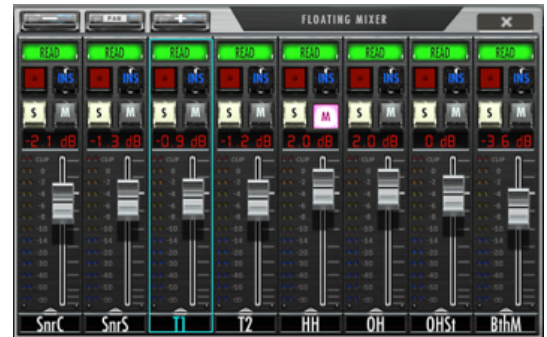
## Floating Mixer

The Floating Mixer buttons brings up a bank of faders on a floating window over the Edit window. The floating mixer can be adjusted and moved anywhere on the screen.



The floating mixer can be expanded or collapsed by pressing the “-” or “+” button on the floating mixer header. The mixer can be viewed as 8, 16 or 24 channels.

Like the RAVEN External Mixer, the floating mixer can also be banked using finger swipes. Touch the fader faceplate and glide your one finger left and/or right to bank by one track at a time. Do not touch the fader cap for a banking motion. Users can also bank more quickly by using two-fingers on the faceplate of the fader tracks and swipe left or right to bank by 24-tracks at a time. Pressing the pan button will switch the top section of the mixer from automation modes to pan modes.



## External Mixer

Pressing the RAVEN MIXER or will open the External free-standing Mixer.



Here users can open inserts, adjust pans, solos/mute, and automation status.

## Sends Mixer

The Channel/Sends button is only accessible in the RAVEN Internal Mixer or RAVEN External Mixer mode, and if active users can touch the Channel button to flip the screens to see their SENDS and corresponding faders.



## Sends Selection

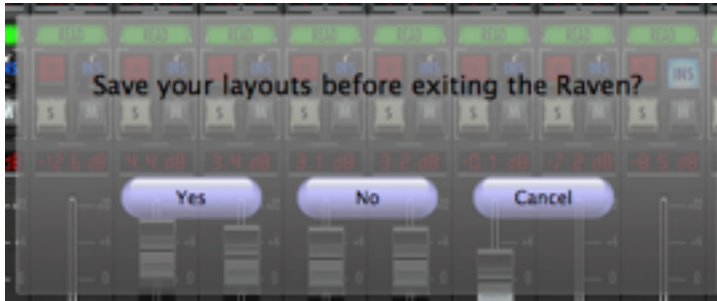
Use the Sends A-E button to toggle between the 5 sends setup in the Pro Tools Mixer. These are relative to the send insert and can control any bus assigned to send A-E.





### Power:

When the Power button is pressed and held for 3 seconds, users will be prompted to save a raven session. If you wish to save your RAVEN session, press yes. If not, press no. Pressing cancel will keep the current RAVEN session running.

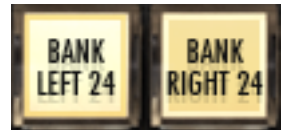


### Banking:

Moving between tracks is quick and easy. Using your finger on the lower half of the fader plate, simply glide one finger across the screen in the direction you would like to move. The tracks will move one track at a time in this scenario.



If you would prefer to move by 24-tracks, simply use two fingers to swipe left or right on the lower half of the fader plates.

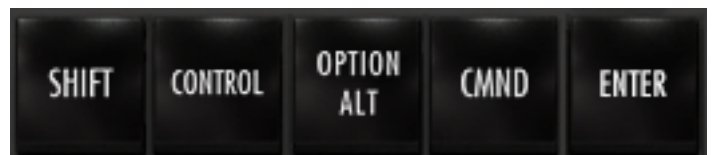


Users may choose to bank tracks by 1 or 24 tracks. To switch between the two modes, simply press and hold the banking buttons and they will switch between 24 and 1.

Users may feel they've reached the end of their project but are missing tracks. This is not the case, RAVEN will only recognize full sets of 24 Tracks. If there are remaining tracks after the user has reached the last set of 24 tracks, the user should then switch to single track banking to reach the last tracks on the Raven Mixer.

### Modifiers:

Modifiers keys latch when touched once, and unlatch 1 second after the a touch ccurs. To use Modifiers with Touch, push down SHIFT+CMND and touch the desired location where the click with modifiers should occur.



### Open/Close Last Plug-in:

Use this button to close plug-in windows or to show the last open plug-in once the plug in window is closed.

### Hide Floating Windows:

This button allows users to quickly Show/Hide any floating windows showing including their sends, automation window and even multiple plug-ins at once.

# RAVEN MTI SOFTWARE CONT:



## Pan Left/pan Right:

This button shows the Right side of any stereo track. To see stereo tracks, touch the button so that it reads "PAN RIGHT" the only track visible will be the right side of any stereo track in your session. Touch the button again to see left panners and



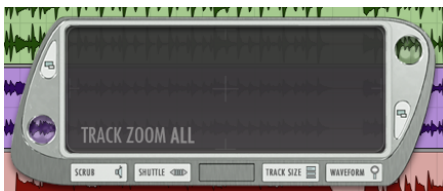
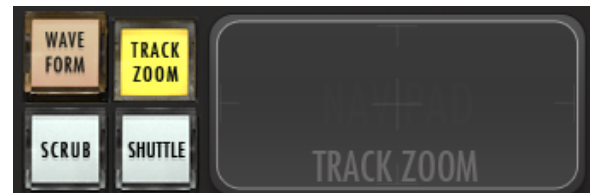
## Navpads and Zooming:

There are two Navpads on the RAVEN Mixer. One floating window, and one built into the tool-bar. Both have the same functionality. Within RAVEN Settings we have included the NAVPAD Response Button. When touched, users are able to adjust the NAVPAD sensitivity of their touch from levels 1 through 20. 1, being the slowest response and 20 being the fastest. Within RAVEN Settings we have included the NAVPAD Response Button. When touched, users are able to adjust the NAVPAD sensitivity of their touch from levels 1 through 20. 1, being the slowest response and 20 being the fastest.



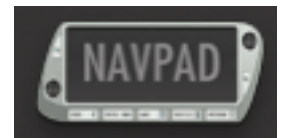
## Tool-bar Navpad:

Navpad located directly on the RAVEN Tool-bar.



## Floating Navpad:

Launches a floating navigation window where you can Zoom, Scroll, Shuttle and Scrub.



The NAVPAD uses an X, Y-axis to control zooming. Use only a single touch to control zooming. The NAVPAD is not designed for two finger pinch gestures for zooming. A two-finger touch moved along the x or y-axis will scroll the edit window.

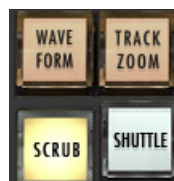
## Waveform Zoom:

Touch the "Waveform" button on the Navpad to adjust the size of the waveform drawn



## Scrub Zoom:

Touch the "Scrub" button to scrub back and forth through the session



## Shuttle Zoom:

Touch the "Shuttle" button to fast forward and rewind in the session





# RAVEN MTI SOFTWARE CONT:

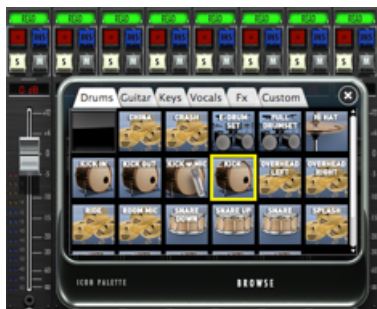
## Track Icons:

The RAVEN has built in icons to help you identify your tracks in a busy mix. To load an icon

Press and hold the Icon slot below the fader module. A floating icon window will appear



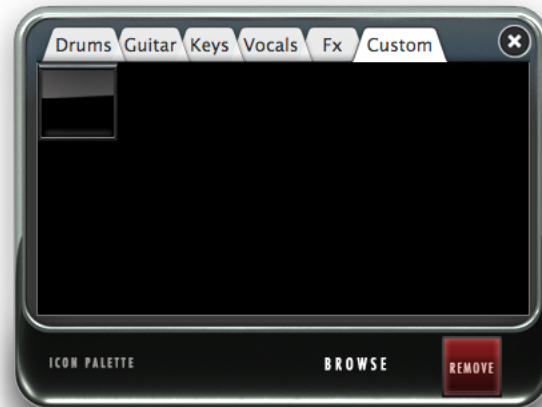
Tap an icon and a yellow box will appear around selected image



Touch each channel icon slot that you wish to load with an image. You can also swipe across the icon slot to load the images.



To remove an icon, touch the blank icon box in the palette, and then touch the channel icon slot you wish to remove.



To add import custom Icons go to the "CUSTOM" tab on the icon palette and hit the "Browse" button. Now import custom images and they will show in this tab.

The icons are saved with the Raven Layout (RAVLAY) based off the track names in the session where the icons are located.

Be sure to save the layout and RAVLAY so the icons will show up on every session and icons don't have to be added every time.

i.e any track named "KICK" will open up the icon associated with that name. So keep the naming short as HUI can only save 4 Character track names. KICK, SNR, VOX1, LV, BGVOX.

# RAVEN MTI SOFTWARE CONT:



## Pan Mode:

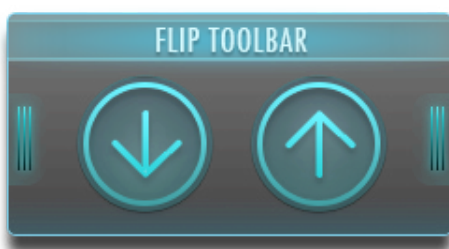
This changes the control of the pan knobs from rotary to traditional up/down. In rotary mode, move your finger in a circular motion around the perimeter of the knob. In up/down mode, touch the middle of the knob and move up or down

## Automation:

Pressing the button above the INS button, the automation drop-down menu will appear. to adjust pan. Select the desired mode, and the mode indicator will change.

## Flip Tool-bar:

Using the "Flip Tool-bar" button, users can now gain access to their lowest three RAVEN Tool-bars without having to display them vertically. Hit the "Flip Tool-bar" button to open a floating window with "Up" and "Down" arrow buttons. Use these two arrows to shift between the bottom three RAVEN Tool-bars on each layout.



## Clip Clear:

This button clears your clips, if needed adjust pan.



## Fine Faders:

Tap this button to put faders into "FINE" mode, where finger movements are slowed to tenths of a DB. Use the "FINE FADERS" button to put all faders into fine mode. Tap the DB display window to put single channels into fine mode.



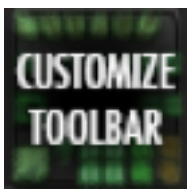
We have also included the ability to control the response of the Fine Faders by pushing and holding the Fine Faders button on the RAVEN Tool-bar. Adjust between 1 and 20, 1 being the slowest response for extreme detail and 20 being the fastest Fine Fader response time.

## Memory Locations:

These buttons function exactly the same as the memory locations feature in Pro Tools. Note: The smaller 6-panel are linked to the larger 16 locations.



# RAVEN MTI SOFTWARE CONT:



## Customize Tool-bar:

Tap this button to enter "Customize Tool-bar" mode. Simply Press the button and it will latch. Drag icons and buttons around the tool-bar to your liking. Press the button again and it will unlatch allowing you to use your custom tool layout.

DUAL RAVENS:  
Use the "Floating Palette" to move buttons between both screens.



## Floating and Essential Palettes:

Pressing one of these buttons will bring up their own customizable floating window. You can populate these windows with tools that are essential to your work flow, and can move them anywhere on the screen.



## ARROWS CURSORS:

Easily control your keyboard cursors like a console with the arrow cursors.layout.



To customize your Essentials Palette or Floating Tool-bar: Press the Customize Tool-bar button on the top left corner of the palette. Drag tools to the desired palette. The palette will automatically resize to fit more or less tools in your configuration. Press Customize Tool-bar button again to exit. If users prefer to not show any RAVEN racks, remove racks all racks with just the Floating Toolbar & Essentials Palette will appear. To bring back the RAVEN Tool-bar, simply press the + Rack button.



# RAVEN MTI SOFTWARE CONT:



## RAVEN Settings:

Touch the "Settings" button on the bottom right of the RAVEN rack and the "Settings" rack will appear at the very top of the RAVEN tool-bar.



## Save As:

Brings up the dialog window for renaming and saving the RAVEN session

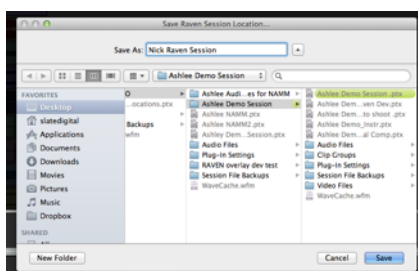


## Save Raven Session:

The RAVEN software allows users to save current layouts, icons, and other customizations to a dedicated session folder. You can save this folder with your DAW sessions and instantly recall them at any point in time. Hit the Save RAVEN Session button to save the current Raven configuration,.

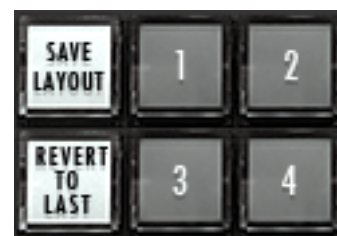


Choose a folder you want to save the session to and give the folder a name and press Save.



## Save Layout:

Saves your RAVEN tool-bar layout, your Floating Tool-bar layout and your configured Batch Commands to a specific button you can get back to easily. Press Save layout and choose a number 1-4, 1-6 or 1-8 to save. To recall your saved layout, press the assigned button.



## Load Raven Session:

Press "Settings" button and select the "Load RAVEN Session" button. Loads a previously saved RAVEN session. (.ravlay file) to a location



Choose a folder you want to save the session to and give the folder a name and press Save.

## Set User Default:

RAVEN automatically launches in RAVEN Factory Default layout. Once users have customize and saved the layouts. The user can set the current layout to launch at default by touching the "Set User Default" button.



Once highlighted to "User Default," the user knows that they are using their layout as default.



# RAVEN MTI SOFTWARE CONT:

## Video:

Direct link to our RAVEN Videos on our SlateDigitalTV Channel.



## Switch RAVEN:

Easily switch between different RAVEN DAW support software.



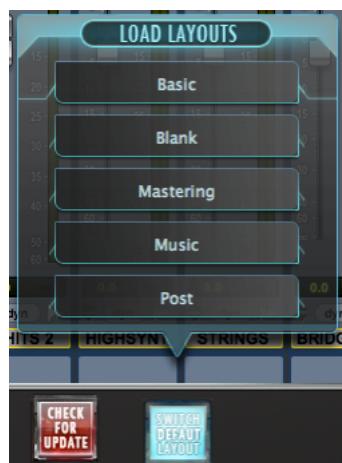
## Check for Updates:

Easily check to confirm your RAVEN software is up-to-date.



## Switch Default Layouts:

Easily change between preset default layouts we have included for various



## User Manuals:

Open your user manual directly from your software and use two fingers to scroll through your manual to find the answer you're looking for.



## Slate RAVEN Forum:

This button will automatically open the default browser and navigate to the Slate Media Technology Forum. You can trade Batch Commands here as well as ask questions to other RAVEN Users.



## Save Pro Tools Session:

On the RAVEN Tool-bar, we have included a Save Pro Tools button that allow s you to quick and easily save your Pro Tools progress. Remember, your Pro Tools session is a different file than your RAVEN Session so be sure to save both frequently when changes have been made.



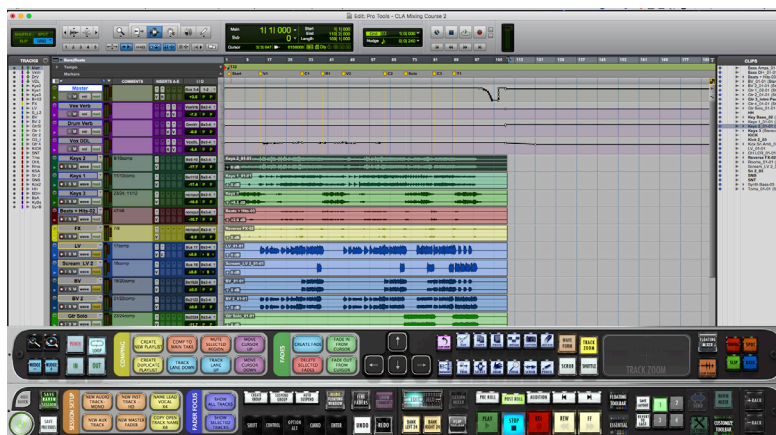


# EDITING WITH PRO TOOLS



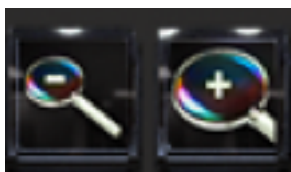
## Edit Window:

RAVEN allows for single touch control over the Pro Tools edit window. Familiar tools and functions can be easily accessed with your fingertips, offering an improved work flow. Use a two finger swipe up or down to navigate around Cubase/Nuendo. To edit events highlight a region with the range tool and use the split Batch Command to break the region. All of the edit tools can be accessed from the tool-bar on the RAVEN racks or with Gestures.



## Zoom In/Out:

Zooms in or out of a section in the Edit window. On Studio One users can also “pinch” zoom in and out of the edit window vertically



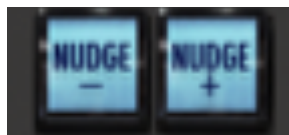
## Tool Palette:

These buttons activate the tools commonly used in Pro Tools. Since they are located on the tool-bar, there is no need to reach to the top of the Pro Tools screen to select tools. Tools with multiple functions can be toggled by pressing the tool button until the right function is selected.



## Nudge +/-:

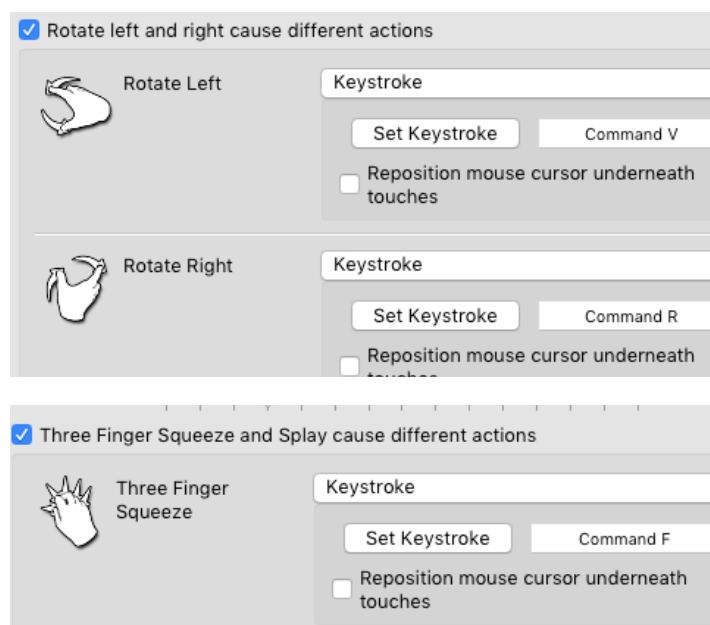
Use the Nudge buttons to nudge a selected audio event forward or backwards.



## Editing Gestures:

Users can also utilize the default Gesture profile for the DAW to quickly edit regions with hand gestures. By default a Rotate Left/Right gesture will break and mute the regions. This will allow users to keep their hands in the edit window without having to reach for the toolbar when editing/

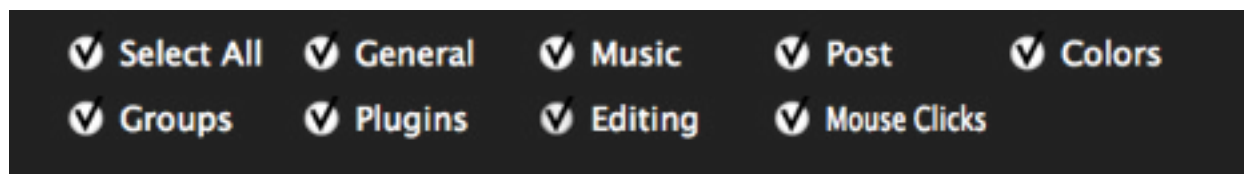
It is also possible to customize these gestures to do Fades and other type of region editing. For example, changing the 3 finger squeeze to CMDN F will create a fade on the selected region.



# BATCH COMMAND SYSTEM CONT

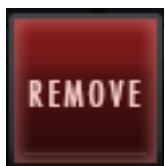
## Search and Filter

On the top of the Quick List, users can search quickly through the Factory & User Batch Commands. For further search refinement, users can quickly filter your search results between various workflow types such as, "General," "Music," "Post," and more within the "Factory" tab.



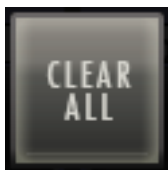
## Remove

Select an undesired Key Command or Quick List item by touching and highlighting it and then hit Remove to eliminate the selected item from the command sequence.



## Clear All

Clear All will completely eliminate all programmed information in the Batch Command menu associated with the selected button. This includes Name & Color.



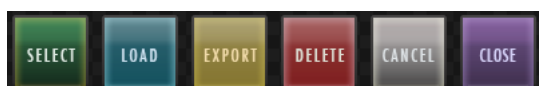
## Save

Use the Save button to save a custom Batch Command. Be sure to give it a name you will recognize in



## Load and Export

Easily share customized Batch Commands on our RAVEN Forum by visiting our website: [www.slatemt.com](http://www.slatemt.com) and visiting the Forum. Create a Batch Command and Save it to your user tab. Then just selected it in your User tab and hit Export. It will export to the location you choose. Additionally, you can Import Batch Commands you find on the forum or even Batch Commands other engineers in your studio have created. the Quick List.



## Quick List

Press the Quick List button in the Batch Command System to enter a Preprogrammed menu selection or mouse click to the command sequence. We have defined the Quick List items by their title, however for details on the specific key commands, menu selections and/or mouse clicks each specific Batch Command is performing, please review our Batch Command programming information below.



## Using the Quick List

Once the Quick List button has been pressed a menu will appear with multiple tabs of preset Batch Commands labeled, "General," "Music," and "Post." Additionally, there is a "User" tab that will allow you to create and save your own Batch Commands within your RAVEN software.

Use two fingers on the menu to scroll through the lists on the various tabs and use the LOAD button to place a Quick List item into the command line

# BATCH COMMAND SYSTEM



## Batch Commander

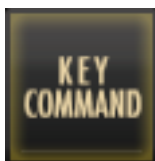
The Batch Command System is a series of single buttons that can execute up to one thousand key commands, menu selections and mouse clicks. The software is complete with over one hundred preset Batch Commands, however it is very easy for users to create their own and even share with other RAVEN users. The Batch Command System window contains multiple functions as explained below.

## Editing a Batch Command

Push and hold one of the Batch Command buttons on the RAVEN Tool-bar for 2 seconds. The Batch Command Menu will launch and you can use the various buttons to program custom macros and work flow enhancements.

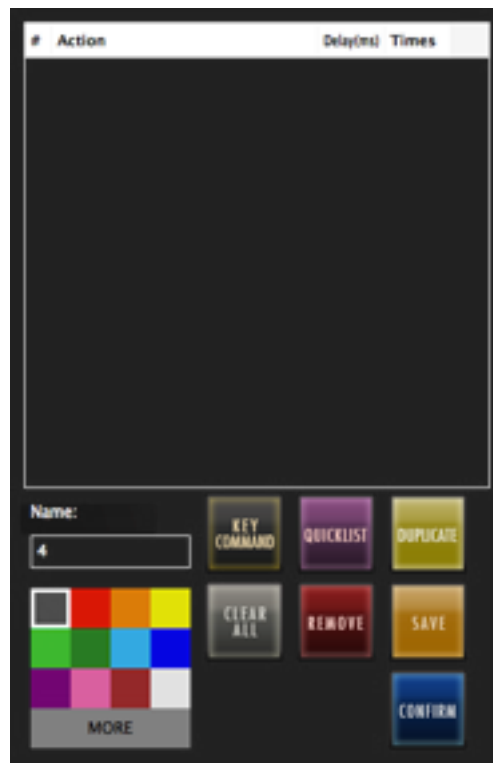
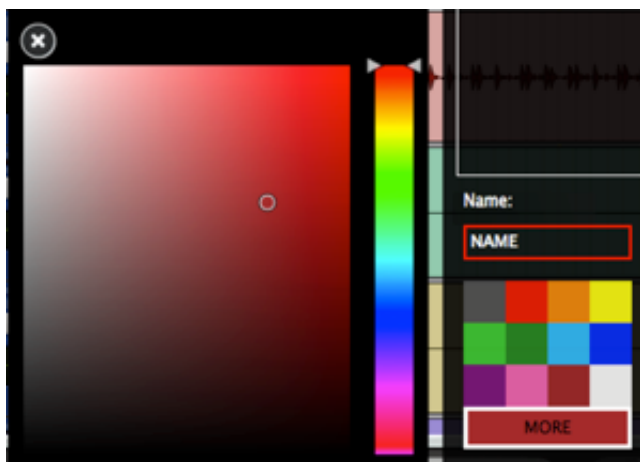
## Key Command

Press the Key Command button in the Batch Command System to enter a Key Command into the command sequence. When using a Modifier key only 1 character per line. If there are no modifier being used, users can type full names in one key command line. i.e vocal, or chorus.



## Name and Color

On the bottom left of the Batch Command Menu there is an empty bar for naming your Batch Command and a block of multiple colors to choose a color for the Batch Command on the



#	Action	Delay(ms)	Times
1	enter key combination...	0	1

## Delay and Repeat Times

Press the Delay space next to a command on the command line and add in an amount of delay in milliseconds. If a Batch Command is not performing correctly, more delay time may need to be added he sequence.

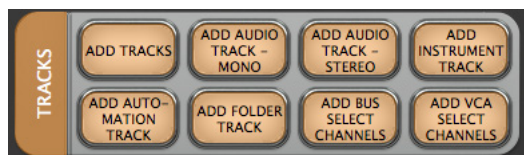
Press the Repeat space to enter a number of times to repeat the command.

Additionally, similar results can be achieved by duplicating the command, however certain commands take better to repetition and others require a duplicate with independent delays on each command line.

# BATCH COMMAND SYSTEM CONT

## Batch Command Panels (RAVPANS)

Push and hold on the label on the side of each Batch Command Panel to open the Naming and color coding interface of the entire Batch Command Panel.

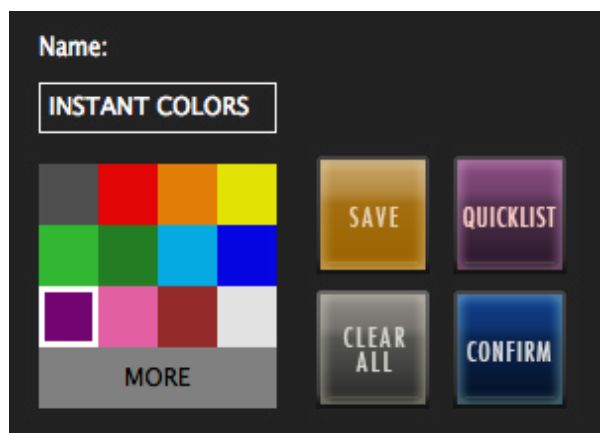


## Save Batch Command Panels (RAVPANS)

Push and hold on the Batch Command Panel label and hit "SAVE" to add a customized Batch Command Panel to your Batch Command Panel User Quick List to use to locate across multiple different layouts.

## Clear Entire Batch Command Panels (RAVPANS)

Push and hold on the Batch Command Panel label and hit "Clear All" to completely delete the contents of a Batch Command Panel quickly. Be careful when using this function as it will delete the entire contents of a Batch Command Panel including Names, Programmings and Colors locate across multiple different layouts.

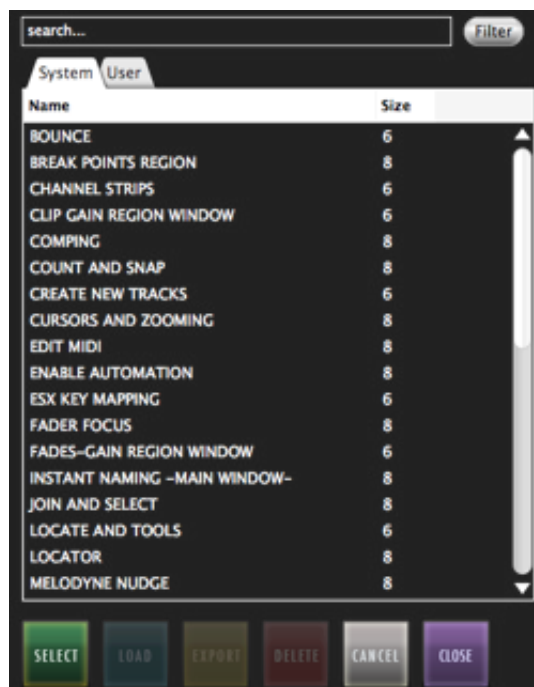


## Batch Command Panel (RAVPAN) Quick List.

Save and recall entire Batch Command panels from the Batch Command Panel Quick List. After pushing and holding the label of one of the Batch Command panels, the Batch Command Panel Naming menu will open as mentioned earlier. Hitting the Quick List will open a menu of preset and user saved Batch Command panels which are labeled by panel size.

To load a saved Batch Command panel into an empty Batch Command panel, simply locate a saved Batch Command panel that shares the correct amount of Batch Commands on the panel as listed in the size column of the Quick List.

If the panel and size are not the same, the panel will reject the conversion.



# BATCH COMMAND SYSTEM CONT



## Customizing a Quick list Batch Command.

We have pre-programmed over one hundred preset Batch Commands for you, however there is a lot of potential for customization. As an example, we have included a “Pitch Shift +12 Cents” Batch Command, however user want it to “Pitch Shift +5 Cents.” First, push and hold an empty Batch Command to open the programming menu. Then open the Quick List tab and search for “Custom Pitch Shift”

Hit the select button on the Quick List window and watch the selection move into your command sequence on the Batch Command System menu. Next, in the “DELAY” box next to the Action Item enter about “50” ms into the space. Now, hit the Key Command button on the Batch Command System menu and enter the number “5.” Lastly, we’ll hit the Quick List button again and from the “General” tab, select “RENDER PLUG-IN SETTINGS (Audio-suite).” Give the button and name and color and hit CONFIRM on the Batch Command System menu. You can now see the Audio-suite Pitch Shifting to the “+5 Cents.” Note: As a user, you are privileged to our on-going support. If you need help with the Batch Command System or do not know how to program one yourself, contact us on the RAVEN FORUM on [www.slatemt.com](http://www.slatemt.com) and we may be able to create one for you and other RAVEN users.

## Program your own Batch Command

To program your own Batch Command, enter a sequence of key commands and/or mouse click and menu selection Quick List items to create a custom Batch Command. When finished, use the SAVE button and locate your saved Batch Command within the USER tab of the Quick List menu.

## Record your own Batch Command

Users can also use the “Record” feature to record and save custom Mouse-Clicks and use those with key commands and quick list Batch Commands. To record a click, push and hold on an empty Batch Command and hit the “Record” button. Perform the sequence you wish to set to the button and once completed, hit the “record” button again. A window will appear to be able to Name the new recording and once saved will show up in the “User” tab of the Batch Command System menu. Open the Quick List menu and highlight the new recording and hit “select” to add it into the Batch Command programming menu.



The Batch Command System Recording feature records based on the X/Y-Axis screen location. Be sure when performing the recorded Batch Command that the window locations are the same as when recorded as the Batch Commands require the correct X/Y-Axis locations

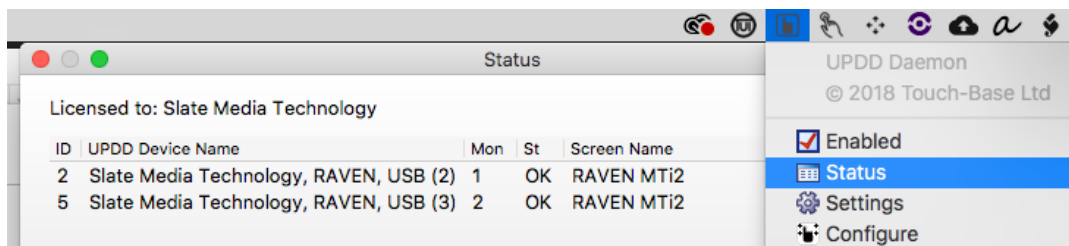


# TROUBLESHOOTING THE TOUCH SCREEN

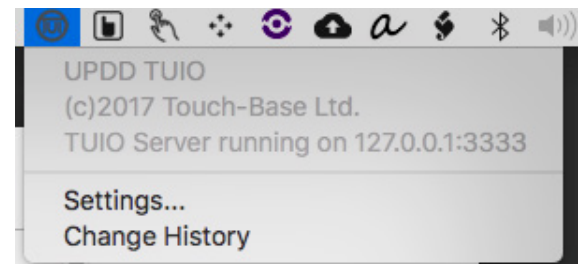
Be sure the USB is plugged directly into the computer as some USB hubs may not have enough power to activate the touch screen. If the RAVEN USB is plugged in direct, try a different port as there maybe a power issue with the port. If that doesn't help, please try a different USB cable, as some USB cables may not have enough power to power the touch screen.

Be sure the correct touch driver is installed for the type of Raven. Raven MTi1 uses Multi Touch Platform and Raven MTi2 uses UPDD. If the RAVEN was purchased after 2015 then it is an MTi2. Users will also notice the RAVEN MTi Logo on the bottom left of the display if it is MTi2.

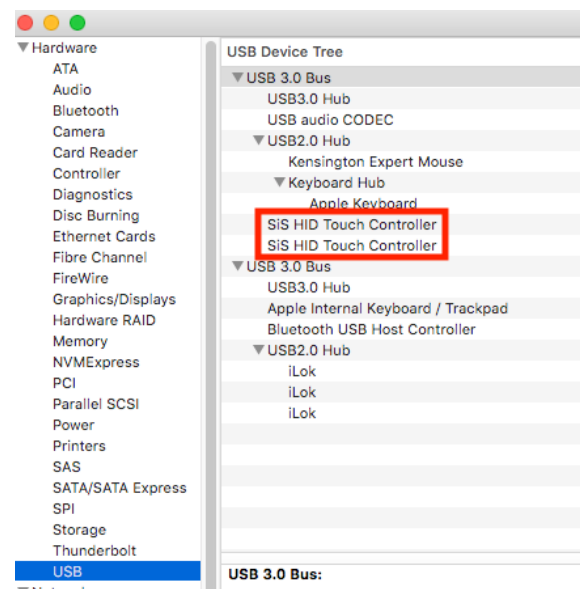
Click the UPDD "Hand" icon up in the menu bar and check "Status" is it set to handle monitor 1. If the status says NOK, then there is an issue with the USB. Also, confirm the screen name is RAVEN MTi2. If the screen name says the name of a non touch display or the name of the computer then users will need to re-configure the touch driver.



If touch works on the display but there is no touch in the RAVEN application, be sure UPDD TUIO is showing in the System Tray in the Task Bar, as this is where Raven gets its touch info from. If it isn't showing, user can launch it from C:/ProgramFiles(x86) /UPDD. If using Dual RAVENs, be sure to launch RAVEN in Dual mode or touch will be off calibration on the RAVEN due to TUIO reporting two touch screens and RAVEN configured for only single.



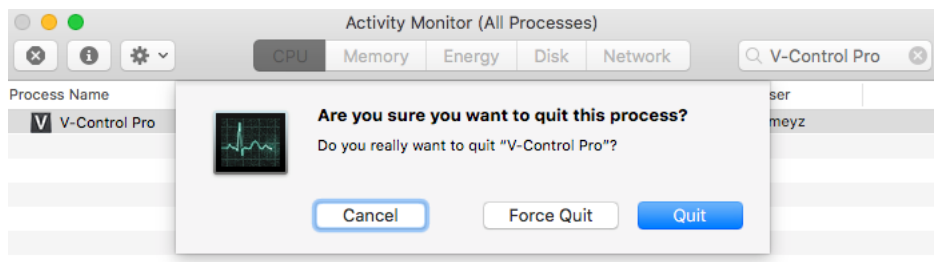
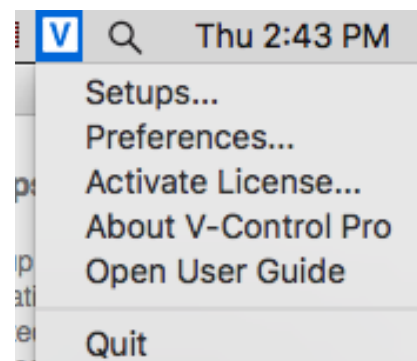
Click the "apple" logo on the top left of the menu bar and go to "About This Mac" then select "System Report" users should notice a USB device called SiS HID Touch Controller. If this device is showing in the USB but UPDD is showing No Registered Devices, then users may need to update to the latest RAVEN installer and re-install UPDD.



# TROUBLESHOOTING V-CONTROL PRO



V-control must first be opened and connected to the DAW for Raven to work correctly, so be sure "V" or V-control is showing in the Top Right Corner of the Menu Bar. If V-Control Pro crashes and users get the spinning beach ball when trying to click the V-Control Pro icon in the menu bar, please force quit V-Control Pro by opening the Activity Monitor from the Applications/Utilities folder and searching for V-Control Pro, then quitting it by clicking the X or right clicking the application from the list.



## TROUBLESHOOTING PRO TOOLS

If there is no communication between Raven and Pro Tools, it is possible HUI has't been configured correctly. Please be sure HUI is enabled for V-control in the Pro Tools MIDI Peripherals.

